

Suïtte 6me

Transcription en Sol majeur

a Violoncello Solo senza Basso.

pour Alto par Yokoyama Shin-Itchiro

J.S. Bach

Prélude

3

6

9

12

15

18

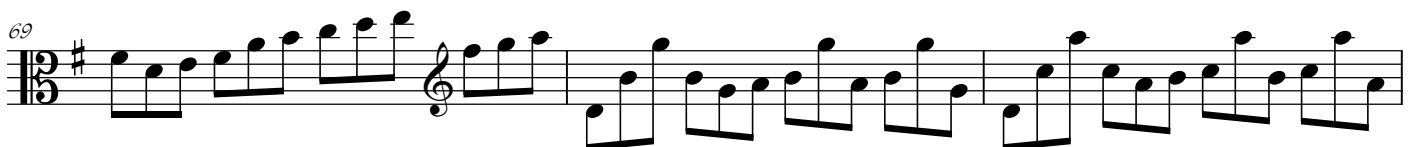
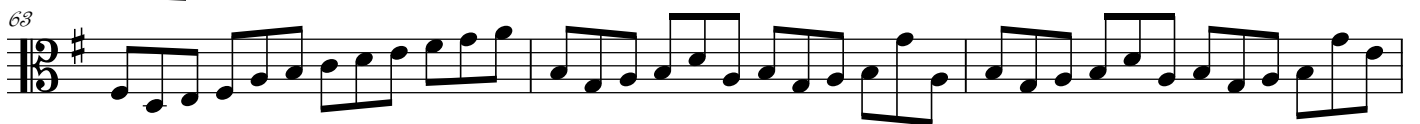
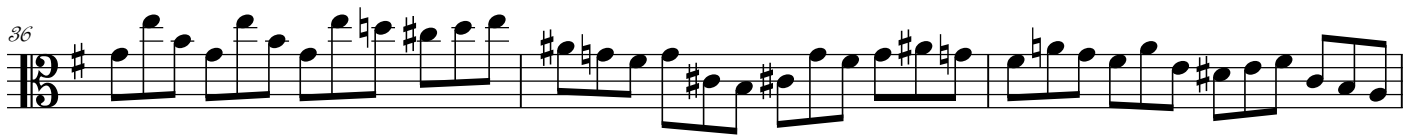
21

24

27

30

Volli Subito



72

75

78

80

83

85

87

89

91

94

96

99

102

ossia

(Adagio)

Allemande

1

2

3

4

5

6

7

8

9

10

11 *tr*

12

13 *tr*

14 *tr*

15 *tr* *tr*

16

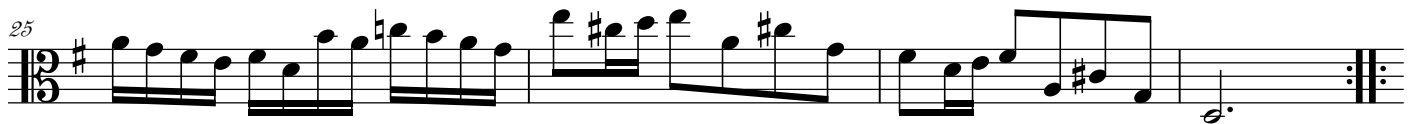
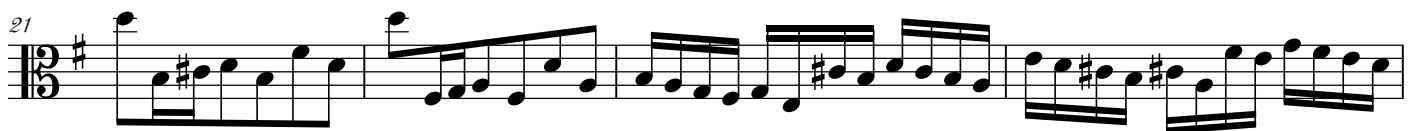
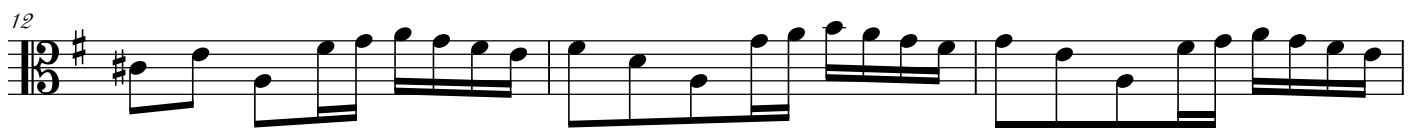
17

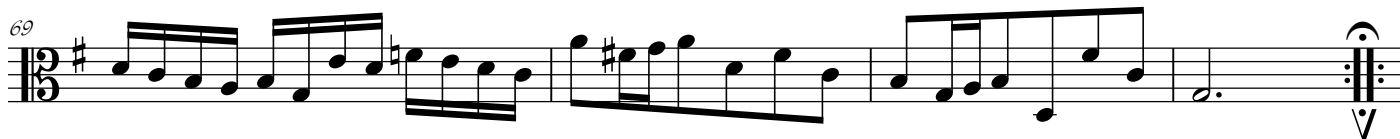
18

19 *8va ad lib.*

20 *tr*

Detailed description: This page contains ten staves of musical notation for a bass clef instrument. The key signature has one sharp (F#). The music consists of a continuous melodic line with various rhythmic patterns, including eighth and sixteenth notes, and rests. Trills are indicated by 'tr' above notes in measures 11, 13, 14, 15, and 20. A dynamic marking '8va ad lib.' is present in measure 19, with a dashed line extending to the end of the staff. The piece concludes with a double bar line and repeat dots in measure 20.





Sarabande 3/8 F\#

Measures 1-4 of the Sarabande piece. The music is in 3/8 time with a key signature of one sharp (F#). The melody consists of quarter notes and eighth notes, often beamed together.

5

Measures 5-8 of the Sarabande piece. Measure 5 starts with a fermata over a dotted quarter note. Measure 6 contains a triplet of eighth notes. The piece ends with a double bar line and repeat dots.

9

Measures 9-12 of the Sarabande piece. The melody continues with quarter and eighth notes, featuring some chromatic movement.

13

Measures 13-16 of the Sarabande piece. Measure 14 includes a dotted quarter note with a fermata. The piece concludes with a final cadence.

17

Measures 17-20 of the Sarabande piece. The melody is primarily composed of quarter notes with some eighth-note pairs.

21

Measures 21-24 of the Sarabande piece. This system features a dense texture with many beamed eighth notes.

25

Measures 25-28 of the Sarabande piece. Measure 26 has a flat sign (Bb) under the second eighth note. The piece ends with a double bar line and repeat dots.

29

Measures 29-32 of the Sarabande piece. Measure 29 begins with a quarter rest. The piece concludes with a final cadence and a downward-pointing triangle.

Gavotte 3/8 F\# C

1 re

Measures 1-4 of the Gavotte piece. The music is in 3/8 time with a key signature of one sharp (F#) and a common time signature (C). The melody is a rhythmic eighth-note pattern.

4

Measures 5-8 of the Gavotte piece. The piece concludes with a double bar line and repeat dots.

